

Menu



Welcome to British Garden Centres



The British Garden Centres story begins in the sleepy Lincolnshire village of Woodthorpe, the home of our company founders, Charles and Robert Stubbs. Charles started the business whilst still at school - he sold seedlings and Leylandii to neighbours and passers-by from a stall at the end of their drive.

Through hard work, determination and drive; the business grew with Woodthorpe Garden Centre, being their first garden

centre, opening in 1987. The business flourished under the ownership of Charles and brother Robert, becoming famous for, amongst other things, huge sales of compost to keen gardeners from all over the region.

Over the years the brothers' reputation grew out far and wide. They were featured on the local news program Calendar for their entrepreneurial skills.

Timeline



The business at Woodthorpe grew and with the addition of Brigg Garden Centre the company's reputation for quality and value began to spread. Further centres were added and the company became known as the British Garden Centres Group. Since 2018 the company has grown at a rate even faster than Charles and Robert could ever have imagined and now has 62 centres around the country. Their ambition to have a British Garden Centre within easy reach of everyone in the UK really is starting to take shape!

As the number of centres has grown so has the number of people in the team. The family are delighted that the next generation is now working in the business. Whatever challenges the world may throw at us we will remain true to our founding principles – great plants and products all year round, first-class service delivered by a wonderful team and all at affordable prices. We hope you love our centres as much as we do.

Visit us online

To find out more about our ever growing number of garden centres, scan the QR code below or visit britishgardencentres.com



Brigg is established as one of the UK's largest garden centres and wins Garden Centre of the Year 2004



Now with 5 Garden Centres, British Garden Centres becomes the umbrella name for the group

Indoor & Outdoor Play Areas



Outdoor Living · Furniture & Barbecue



Beautiful plant Areas · Gardening Expertise



Woodborough Green & Lytham St. Annes join the family as garden centres 59 & 60 respectively

The next generation



2018 - 19 Group expands from 10 to 58 centres

The Family Card Launches with thousands registering to receive exclusive offers



British Garden Centres launches a company rebrand and adopts the Butterfly symbol



Frosts Garden Centre is purchased and named Brigg Garden Centre

Huge garden centre development at Brigg is completed in 2004

Woodthorpe Leisure Park becomes part of the British Garden Centres family

2000

2004

2010

2013

2018 & 2019

2019

2021

2022

2022



At the Gardener's Retreat Restaurant we're passionate about delivering quality food and great service.

Our team of dedicated professionals work hard to deliver freshly prepared dishes. We pride ourselves in providing the best possible dining experience.

We look forward to seeing you again & again.



No Kcal Menus

If you require a menu which does not display kcal values, ask a team member who will supply you with one, or scan the QR code to view an online version.

Food Allergies. All food is prepared in a kitchen where nuts, gluten and other allergens could be present and our menu descriptions cannot include all ingredients. If you have a food allergy, please let us know before ordering. We cannot guarantee that our vegetarian or vegan ingredients have been cooked in dedicated fryers. Please ask a member of team for more information. All weights are approximate prior to cooking and may be subject to change.

Photography for illustration purposes only. We reserve the right to alter items from time to time.

British Garden Centres



Coffee with Real Character

Stokes Tea & Coffee has become known as Lincolnshire's favourite coffee roaster.

This award-winning family firm has been investing passion and pride into coffee roasting and the tea blending process for over 120 years. Nick Peel is the fourth generation to run the firm which supplies wholesale and retail customers, and operates destination cafés in Lincoln together with a dedicated barista training academy.

www.stokescoffee.com



Finest full leaf teas from the best tea gardens

Tea From The Manor began in 2011 when James and his daughter, Charlotte took just a few different flavoured teas to a farmers market.

Today, Tea From The Manor gathers the finest full leaf teas from the best tea gardens around the world to delight the palates of its customers. Their loose & bagged teas are of the finest grade and enjoyed by those seeking a first class tea experience - they are passionate about tea!

www.teafromthemanor.co.uk



Our Supply Partners

We have carefully chosen our supply partners to ensure that our customers are always receiving great value.

Find out more...

Scan the QR code below or visit: www.britishgardencentres.com/suppliers





Visit Us Online

For all the latest centre specific news, offers and events,
follow us online: www.britishgardencentres.com
Alternatively follow us on social media: [#britishgardencentres](https://twitter.com/britishgardencentres)



Facebook

Local centre accounts available



Instagram

Local centre accounts available



Tik Tok



Youtube



Pinterest



LinkedIn

We'd love
to hear your
feedback

Your comments are important
to us and help us to refine and
improve our service.



Hot Drinks

Tea

Tea 0 kcal (milk 14 kcal)
Fruit Tea/Speciality Tea 0 kcal

Filter Coffee

Regular 0 kcal (milk 14 kcal)
Large 0 kcal (milk 25 kcal)

Flat White 80 kcal

Latte

Regular 96 kcal
Large 192 kcal

Cappuccino

Regular 97 kcal
Large 193 kcal



Flat White



Latte



Cappuccino



Mocha



Americano



Espresso



Hot Chocolate



Hot Chocolate Special
with Marshmallows
& Whipped Cream

Mocha

Regular 115 kcal
Large 150 kcal

Americano

Regular 0 kcal (milk 14 kcal)
Large 0 kcal (milk 25 kcal)

Espresso 0 kcal

Hot Chocolate

Regular 271 kcal
Large 541 kcal

Hot Chocolate Special

With Marshmallows & Cream
Regular 383 kcal
Large 653 kcal

Coffee Syrups

See our display of Coffee Syrups for our full range of flavours. Low sugar alternatives are available.

We have dairy free alternatives

Just let us know when you order and choose from a range of options.

Cold Drinks

We have a wide choice of refreshing cold drinks available to choose from.

Still, sparkling and juice, see our drinks cabinet for availability.



Adults need around 2000 kcal a day

TEA



FROM THE MANOR



STOKES

TEA & COFFEE



The Big Breakfast



Loaded Breakfast Omelette



Eggs Benedict

Breakfast

Served until 11.00am 

The Big Breakfast

NGCI Available

2 Farmhouse pork sausages, 2 rashers of bacon, 2 grilled seasoned halved tomatoes, sautéed mushrooms, 2 hash browns, baked beans and 2 fried eggs, served with 2 slices of toast and a choice of tea or filter coffee. 1433 kcal (milk +14 kcal).

Add Black Pudding 167 kcal

Full English Breakfast

NGCI Available

Farmhouse pork sausage, 2 rashers of bacon, grilled seasoned half tomato, sautéed mushrooms, hash brown, baked beans and a fried egg, served with toast. 868 kcal.

Add Black Pudding 167 kcal

Loaded Breakfast Omelette

NGCI Available

Omelette topped with farmhouse pork sausage, a rasher of bacon, sautéed mushrooms, baked beans and melted mature cheddar cheese. 915 kcal.

Add Black Pudding 167 kcal

The Big Veggie **V**

3 Vegetarian sausages, 2 grilled seasoned halved tomatoes, 2 hash browns, sautéed mushrooms, baked beans and 2 fried eggs, served with 2 slices of toast and a choice of tea or filter coffee. 1075 kcal (milk +14 kcal).

Vegetarian Breakfast **V**

2 Vegetarian sausages, 1 grilled seasoned half tomato, sautéed mushrooms, 2 hash browns, baked beans and a fried egg, served with toast. 806 kcal.

Loaded Vegetarian Omelette **V**

Omelette topped with 2 vegetarian sausages, sautéed mushrooms, baked beans and melted mature cheddar cheese. 844 kcal.

How To Order

- Find a table, take note of the number.
- Place your order at any of our tills.
- Collect your hot drinks at the counter and cutlery and condiments from the stations.
- Food will be served to your table.



Breakfast

Served until 11.00am



Eggs Benedict

Toasted English muffin topped with ham, 2 soft poached eggs, creamy hollandaise sauce and watercress to garnish. 669 kcal.

Potting Shed Breakfast

Toasted English muffin topped with black pudding, bacon, 2 soft poached eggs, creamy hollandaise sauce and watercress to garnish. 1153 kcal.

Bacon Sandwich

NGCI Available

White bloomer or malted wheat brown bread filled with 3 rashers of bacon. 652 kcal.

Sausage Sandwich

NGCI Available

White bloomer or malted wheat brown bread filled with 2 farmhouse pork sausages. 611 kcal.

Toast and Preserves

NGCI Available

2 slices of white bloomer or malted wheat brown bread toasted, with your choice of preserve. 422 kcal.



Toast & Preserves



Potting Shed Breakfast



Bacon Sandwich

Breakfast Add Ons Choose from the following:

1 Fried Egg 120 kcal

1 Rasher Bacon 113 kcal

2 Hash Browns 210 kcal

1 Slice Black Pudding
167 kcal

A Slice of Toast 195 kcal

1 Sausage 150 kcal

1 Vegetarian Sausage
96 kcal

A plate of Gammon Steak featuring a fried egg, pineapple slices, beer battered onion rings, sautéed mushrooms, a grilled tomato half, and garden peas.

Gammon Steak

Main Meals

Served from 11.30am 

8oz Gammon Steak*

NGCI Available

Grilled gammon steak topped with your choice of fried egg or grilled pineapple, served with chips, beer battered onion rings, sautéed mushrooms, grilled seasoned tomato half and garden peas. Egg 1081 kcal, Pineapple 977 kcal.

Add Egg 120 kcal

Add Pineapple 26 kcal

Traditional Beef Lasagne

Layers of rich Bolognese sauce and pasta topped with a cheese sauce, toasted cheese breadcrumbs, served with a salad garnish and toasted garlic ciabatta. 876 kcal.

Add Chips 410 kcal

Breaded Scampi

Delicious scampi in a light golden breadcrumb served with chips, garden peas, lemon wedge, and tartar sauce. 825 kcal.

Italian Chicken **NGCI Available**

Crispy coated buttermilk chicken breast fillet topped with Italian style tomato and herb sauce, toasted cheese breadcrumbs, served with chips and a salad garnish. 897 kcal.

Sausage, Egg and Chips

NGCI Available

Vegetarian sausages available

2 farmhouse pork sausages served with a fried egg, chips and your choice of baked beans or garden peas. Peas 855 kcal, Baked Beans 869 kcal.

Loaded Brunch Omelette

Omelette topped with ham, sautéed mushrooms and melted mature cheddar cheese, served with chips and salad garnish. 767 kcal.

Battered Chicken Bites

Quorn option available

Battered chicken breast bites served with chips, salad garnish and your choice of BBQ or sweet chilli dipping sauce. BBQ 898 kcal, Chilli 910 kcal.

Smothered Chicken

NGCI Available

Crispy buttermilk chicken breast fillet topped with bacon, smoky BBQ sauce, toasted cheese breadcrumbs, served with chips and salad garnish. 1054 kcal.

A plate of Traditional Beef Lasagne with a side salad and bread.

Traditional Beef Lasagne

A plate of Breaded Scampi with a lemon wedge and chips.

Breaded Scampi

Try our delicious Carvery

A choice of hand carved meats served with Yorkshire Puddings and seasonal vegetables.

See carvery board for average kcal values.

Please note Carvery not available in all restaurants.

For serving times & availability please check our website or ask a team member



Burgers

All our burgers are served in toasted Pretzel Burger Bun with gem lettuce, sliced tomatoes and red onion, served with chips, beer battered onion rings and chunky coleslaw.

Classic 6oz Cheeseburger*

Prime 6oz beef burger topped with melted mature cheddar cheese. 1341 kcal.

Add Bacon 113 kcal

Brie and Bacon Burger with Caramelised Onion Chutney*

Prime 6oz beef burger topped with bacon, melted creamy brie and caramelised onion chutney. 1561 kcal.

Chicken Burger with Lemon and Herb Mayonnaise

Crispy buttermilk chicken breast topped with lemon and herb mayonnaise. 1198 kcal.

Plant Based Burger

 Without coleslaw

Plant based pattie made with a delicious blend of herbs, spices and protein topped with vegan style bacon and smoky BBQ sauce. 1305 kcal.

Add Smoked Applewood Style Vegan Cheese  61 kcal

Sides

Portion of Chips 410 kcal

Toasted Garlic Ciabatta  454 kcal

Beer Battered Onion Rings

434 kcal

Chunky Coleslaw

140 kcal

Bread and Butter  NGCI 346 kcal

House Salad  23 kcal

Adults need around 2000 kcal a day **NGCI** - No Gluten Containing Ingredients option available  - Vegetarian  - Vegan

Vegetarian

Cream Cheese and Broccoli Bake

Sliced potatoes in a creamy cheese and broccoli sauce topped with toasted cheese breadcrumbs, served with salad and toasted garlic ciabatta. 828 kcal.

Add Chips 410 kcal

Butternut Gobi Dhansak

 With chips instead of rice

Vegan style curry, cauliflower florets, butternut squash, peppers, split peas and lentils in a mildly spiced curry sauce, served with pilau rice, naan bread and mango chutney. 631 kcal.

Vegetarian Loaded Omelette

Omelette topped with tomatoes, sautéed mushrooms, red onion and mature cheddar cheese, served with chips and salad garnish. 745 kcal.

Salads

Gardener's Platter

Ham and mature cheddar cheese, salad garnish, watercress, boiled egg, apple, celery, pickled onions and caramelised onion chutney, served with a wedge of bloomer bread and butter. 769 kcal.

Chicken Tikka and Mint Mayonnaise

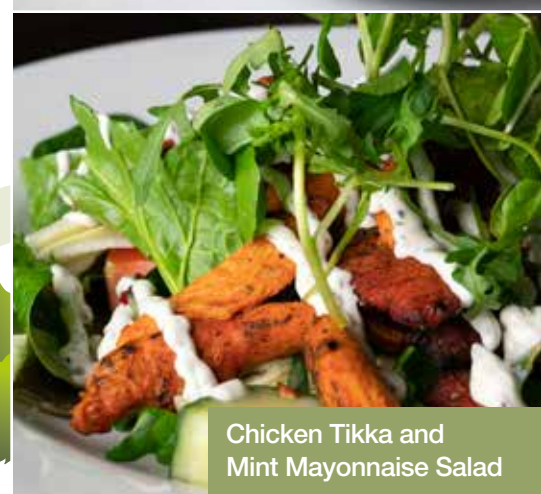
Served on a bed of dressed mixed salad leaves, cucumber, tomato, red onion, radishes, carrot, watercress in a reduced fat French dressing, served with a wedge of bloomer bread and butter. 515 kcal.



Classic Cheeseburger



Butternut Gobi Dhansak



Chicken Tikka and Mint Mayonnaise Salad



Chicken Tikka and Mint Mayonnaise Jacket Potato



Soup of the Day



Jacket Potato with Baked Beans

Lighter Appetite Meals

A selection of our menu favourites reworked for the lighter appetite.


Battered Chicken Bites served with small Chips and Salad Garnish
560 kcal.


Breaded Scampi served with small Chips and Salad Garnish
540 kcal.

4oz Gammon Steak served with small Chips and Salad Garnish
440 kcal.

Jacket Potatoes

All jacket potatoes are served with butter, salad garnish and your choice of filling.

Plain with Butter 
480 kcal.

Baked Beans 
561 kcal.

Mature Cheddar Cheese 
892 kcal.

Tuna Mayonnaise
673 kcal.


Chicken Tikka and Mint Mayonnaise
630 kcal.

Prawns in a Marié Rose Sauce
665 kcal.

Sandwich Platters

Your choice of white bloomer or malted wheat brown bread, served with either chips or salad and chunky coleslaw. **NGCI bread is available upon request.**

Egg Mayonnaise 
Chips 820 kcal, Salad 556 kcal.

Grated Mature Cheddar Cheese and Caramelised Onion Chutney 
Chips 1119 kcal, Salad 856 kcal.

Ham Salad
Chips 748 kcal, Salad 485 kcal.

Tuna Mayonnaise
Chips 809 kcal, Salad 546 kcal.

Chicken Tikka and Mint Mayonnaise, Lettuce and Cucumber
Chips 805 kcal, Salad 542 kcal.

Prawns in a Marié Rose Sauce, Lettuce and Cucumber
Chips 840 kcal, Salad 577 kcal.

Jacket Potato Add Ons

Chunky Coleslaw
140 kcal

Baked Beans 81 kcal

Mature Cheddar Cheese
412 kcal

Sandwich Wraps

Tortilla wrap, served with either chips or salad and chunky coleslaw.

Egg Mayonnaise

Chips 793 kcal, Salad 530 kcal.

Grated Mature Cheddar Cheese and Caramelised Onion Chutney

Chips 1092 kcal, Salad 829 kcal.

Ham Salad

Chips 721 kcal, Salad 458 kcal.

Tuna Mayonnaise

Chips 782 kcal, Salad 519 kcal.

Chicken Tikka and Mint Mayonnaise, Lettuce and Cucumber

Chips 778 kcal, Salad 515 kcal.

Prawns in a Marié Rose Sauce, Lettuce and Cucumber

Chips 813 kcal, Salad 550 kcal.

Grilled Ciabattas

All ciabattas are served with salad garnish and chunky coleslaw.

Ham and Mature Cheddar Cheese 660 kcal.

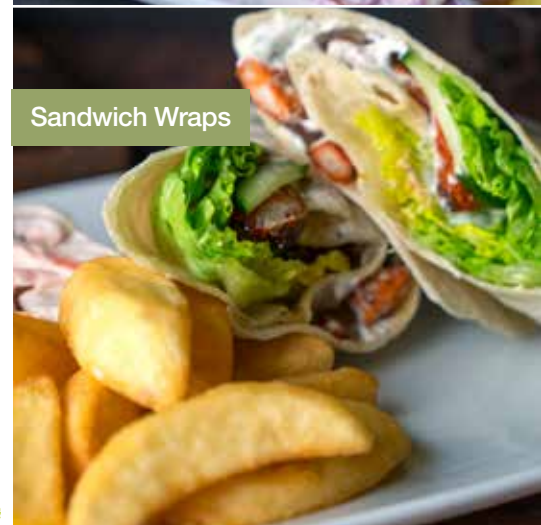
Fishless Finger, Gem Lettuce, Cucumber, Tomato, Red Onion and Tartar Sauce. 608 kcal.

Tuna Mayonnaise and Mature Cheddar Cheese 744 kcal.

Brie, Bacon and Caramelised Onion Chutney 726 kcal.

Chicken Tikka and Mint Mayonnaise 574 kcal.

Tuna Mayonnaise
Sandwich Platter



Sandwich Wraps

Ham & Mature Cheddar
Cheese Ciabatta

Served from 11.30am



See the board for today's specials

Kcal values will also
be displayed on the
specials board.

Soup of the Day

Garnished with croutons,
served with bloomer bread.
See specials board for price and
kcal value.





Treat yourself to an Afternoon Tea

Enjoy a delicious selection of sweet and savoury treats served with tea and coffee.

Advanced bookings only.

How to book your Afternoon Tea...

A £5.00 non-refundable deposit per guest is payable at the time of booking. This can be paid in our restaurant or over the phone by card. You will then receive a receipt confirming your booking.

Please note we require your parties choices at the time of booking.

See in-restaurant promotional material for afternoon tea kcal value per person.

Please call the restaurant to book your afternoon tea.



Photography for illustration purposes only and may vary across centres



Try our delicious Cakes and Desserts

Each week we will be offering a great selection of freshly prepared tasty treats to complement your meal, please see our desserts board for this weeks selection.

Too full? Do you still want to have your cake and eat it? Now you can with our takeaway cakes. Perfect when you just can't quite fit it all in.

Adults need around 2000 kcal a day

Family Card Rewards

Enjoying your Family Card? Get more of a good thing.

- Enjoy priority access to events
- Exclusive registered card offers
- Free entry into our monthly prize draw
- Receive regular discount vouchers

Register online today at
britishgardencentres.com/familycard



Don't
Miss
Out



Coach Parties

Great stop off locations on main routes.

Stop off for a leg stretch and some refreshment at one of our centres close to main routes up and down the UK. With ample parking and toilet facilities.

Destination garden centres

Make a day of it at our destination garden centres like Brigg, Burford House, Bressingham and many more. Stop off for a welcome break at our centres as part of your excursion.



Fantastic
Garden
Centres
across the
UK!



Enjoy a unique shopping experience. See our huge selection of gift ideas, plants, gardening equipment, outdoor furniture, barbecues, home & soft furnishings (selected centres).

Get a Free Meal or Drink

We've a range of restaurant loyalty cards to suit your tastes, simply collect drinks and meal 'stamps' on your chosen cards. Choose from hot drinks, breakfast and specials or pick up all three.

Pick up your loyalty card in-restaurant and start collecting stamps today.



Planning an event? Talk to us...

**Christenings, Birthdays,
Special Days, Wakes...**

Ask a member of our team or contact your nearest restaurant to see how we can cater for you and your needs.

britishgardencentres.com/find-us



Fancy a weekend away?

Why not get away from it all and visit Woodthorpe Leisure Park, located in the picturesque heart of Lincolnshire.

- Lodges and Glamping Pods
- Caravan Holidays • Fishing Lakes
- Country Cottages • Touring Park
- Woody's Restaurant and Bar
- Golf Course and Driving Range



woodthorpeleisurepark.com

Book your holiday with us today
call **01507 450294**



For centre specific opening and serving times plus carvery availability, please scan the QR code to visit the British Garden Centres website.

British Garden Centres